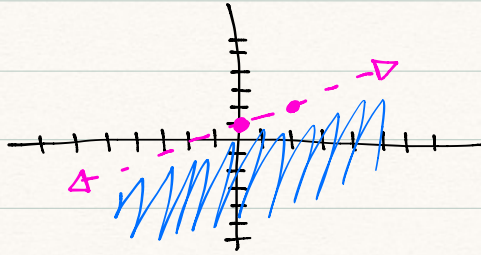


## Graphing Linear Inequalities

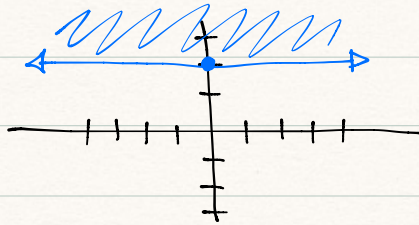
Ex)  $y < \frac{1}{2}x + 1$   
slope  $\downarrow$   $\hookrightarrow$  y-int

$$0 < \frac{1}{2}(0) + 1$$
$$0 < 1$$



Ex)  $y \geq 2$

$$0 \geq 2$$



Ex)  $2x + 3y \geq 6$

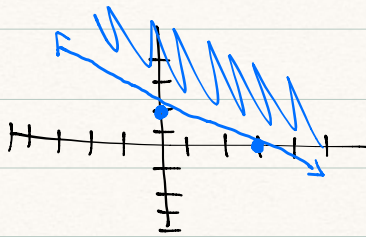
$$0 \geq 6$$

x-int:

$$\frac{2x + 3(0)}{2} \geq \frac{6}{2}$$
$$x \geq 3$$

y-int:

$$2(0) + \frac{3y}{3} \geq \frac{6}{3}$$
$$y \geq 2$$



P. 129  
25-33